



Ayelet Tours, Ltd.



www.ayelet.com • (800) 237-1517

We're Taking People Places



Nahalat Binyamin



"קום התהלך בארץ..."

(בראשית י"ג, י"ז)

"Get up and walk the land..."

(Genesis 13:17)

Dear Ayelet Tours Travelers,
Bruchim Habaim – Welcome to Israel!

Whether this is your first trip or you are a return visitor, each day here offers the opportunity for unique and unforgettable experiences. Approach your time here with an open heart and an open mind, and you will be rewarded with both increased understanding of your heritage and connection with your roots.

Israel boasts landscapes and cityscapes that are not found anywhere else in the world. From the ancient stones and deep-rooted faith of Jerusalem, to the beaches and beauty of the south and the lush forested landscapes of the north, it's all here awaiting your exploration.

This is a land that will delight your senses: Browse the galleries filled with colorful work from local Israeli artists. Savor the fresh fruits and vegetables, and the new combinations of flavors available in all varieties of cuisine. Soak in the language and energy all around you. Take in the unique character of Israeli culture – from bargaining with shop keepers to people watching at local café. It's all here waiting for you.

Most of all, know that you are in good hands. If you see a way we can enhance your Israel experience, please let us know so we may have the opportunity to make it better both for you and for future Ayelet Tours travelers.

We hope that you too will inspired by all that Israel has to offer.

Nesiyah Tova!
Diane, Jeff, Seffie and the entire Ayelet Tours family.

Timeline of Historical Periods



Canaanite Period



Babylonian Period
and destruction of First Temple



Hellenistic
Period



Roman Period



Byzantine Period



Crusader Period



Ottoman Period



British Mandate

3600 B.C.E

1200 B.C.E

1000 B.C.E

940 B.C.E

586 B.C.E

520 B.C.E

322 B.C.E

167 B.C.E

63

70

324

638

1099

1261

1517

1882

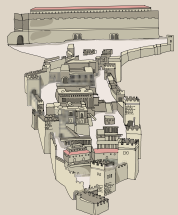
1917

1948

Judges



Building of First Temple



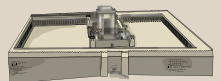
Persian Period
and construction of the Second Temple



Hasmonean
Period



Destruction
of the Second Temple



Arab Caliphate Period



Mamluk Period



First Aliya



Establishment of the State of Israel
Jerusalem, Israel's capital



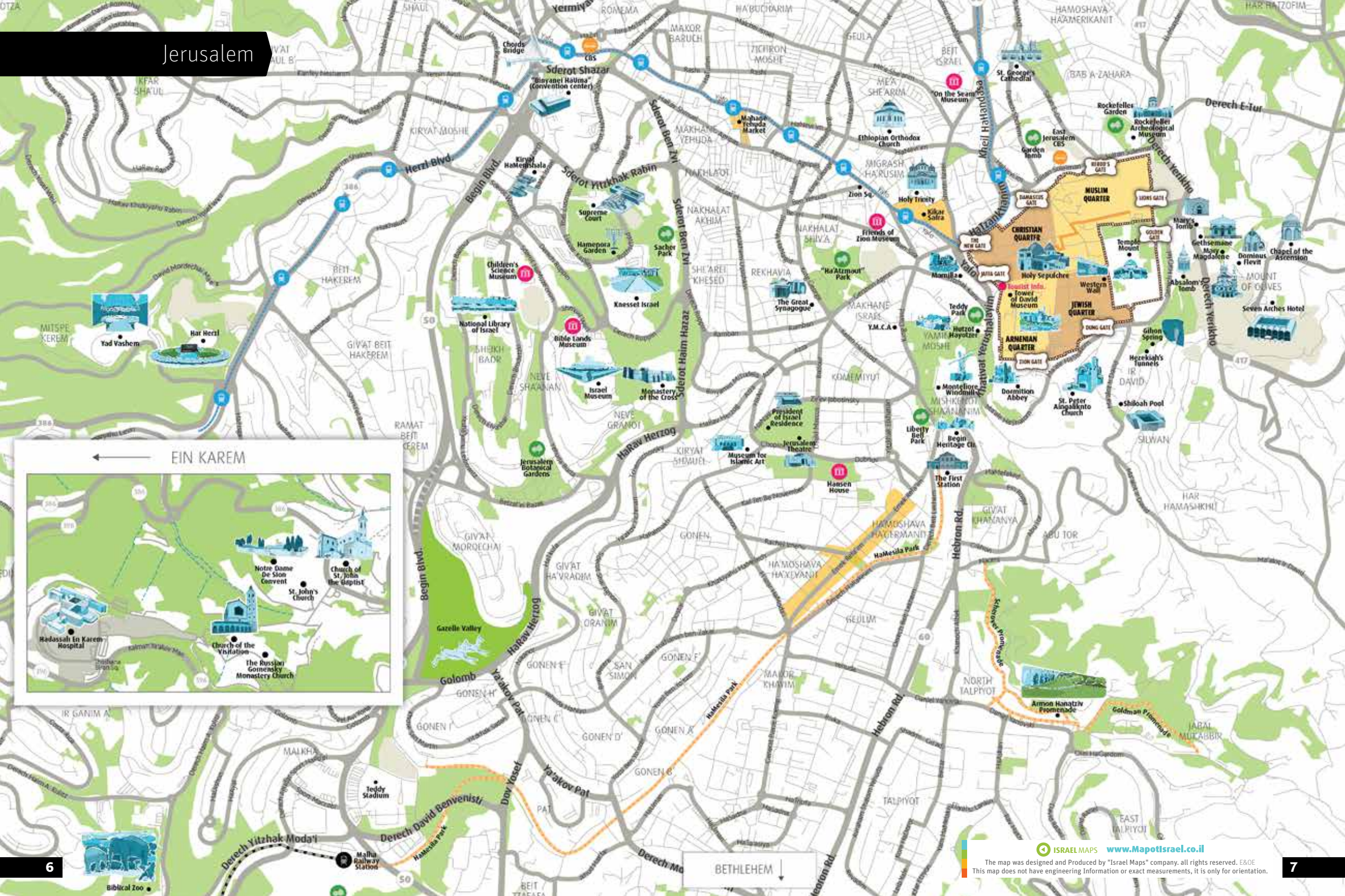
Old City of Jerusalem

Map of the Old City of Jerusalem showing major landmarks, streets, and the four main quarters: Muslim Quarter, Jewish Quarter, Christian Quarter, and Armenian Quarter. The map includes a red line with numbers 1 through 14, indicating a specific route through the city. Key locations labeled include the Dome of the Rock, Church of the Holy Sepulchre, Western Wall, and various gates like the Jaffa Gate and Zion Gate. The map also shows surrounding areas like the Mount of Olive and the City of David.

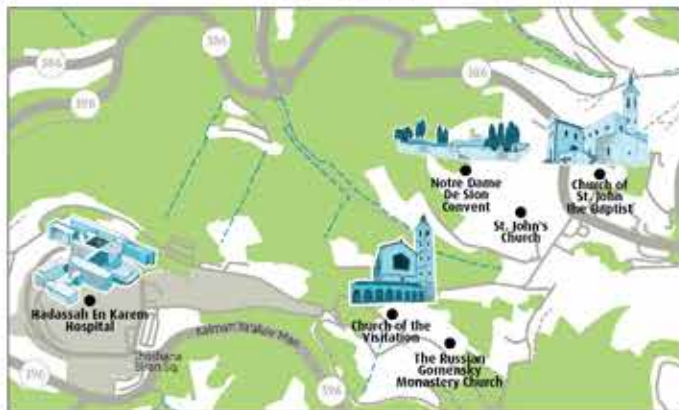
4

5

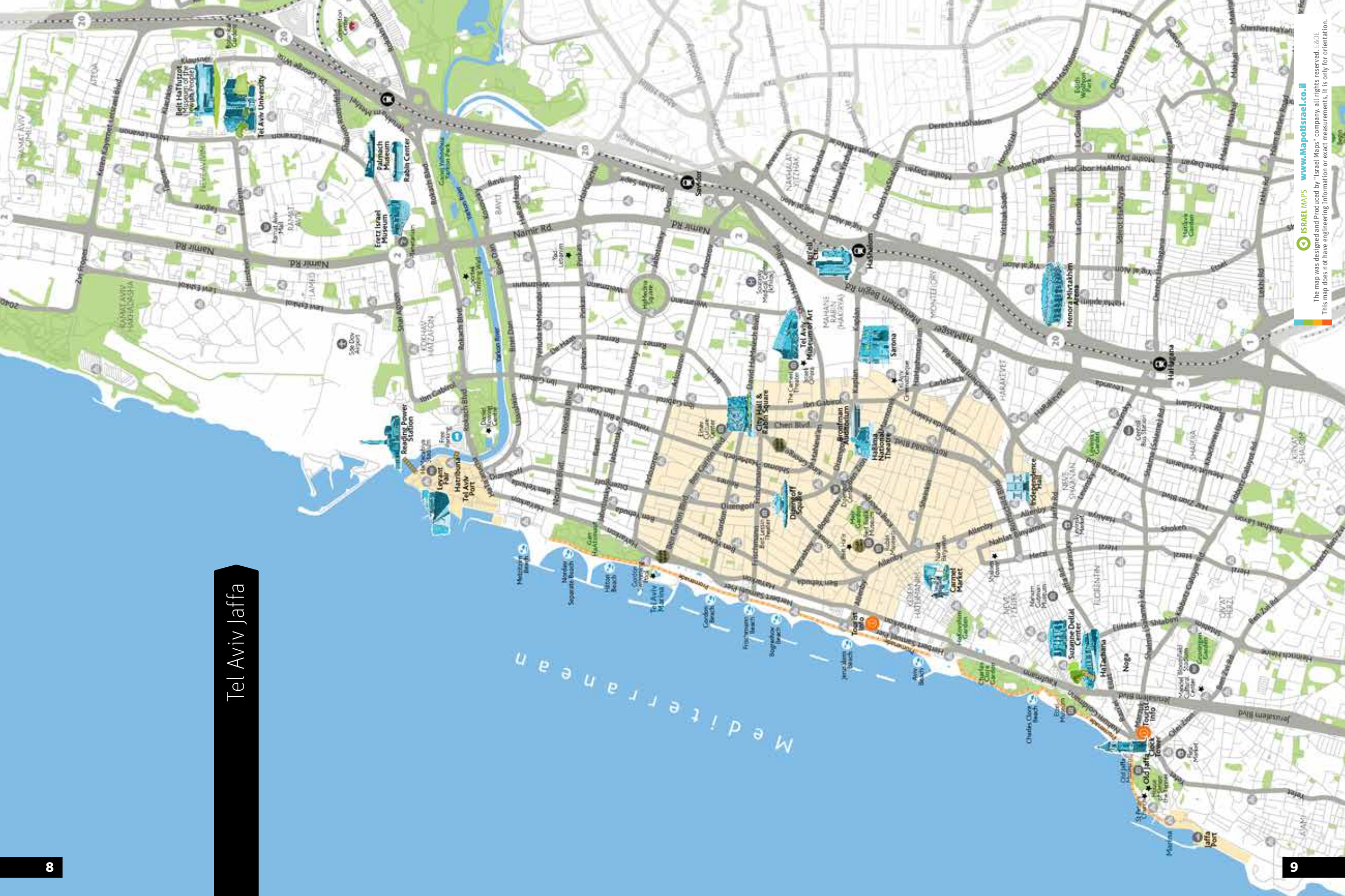
Jerusalem



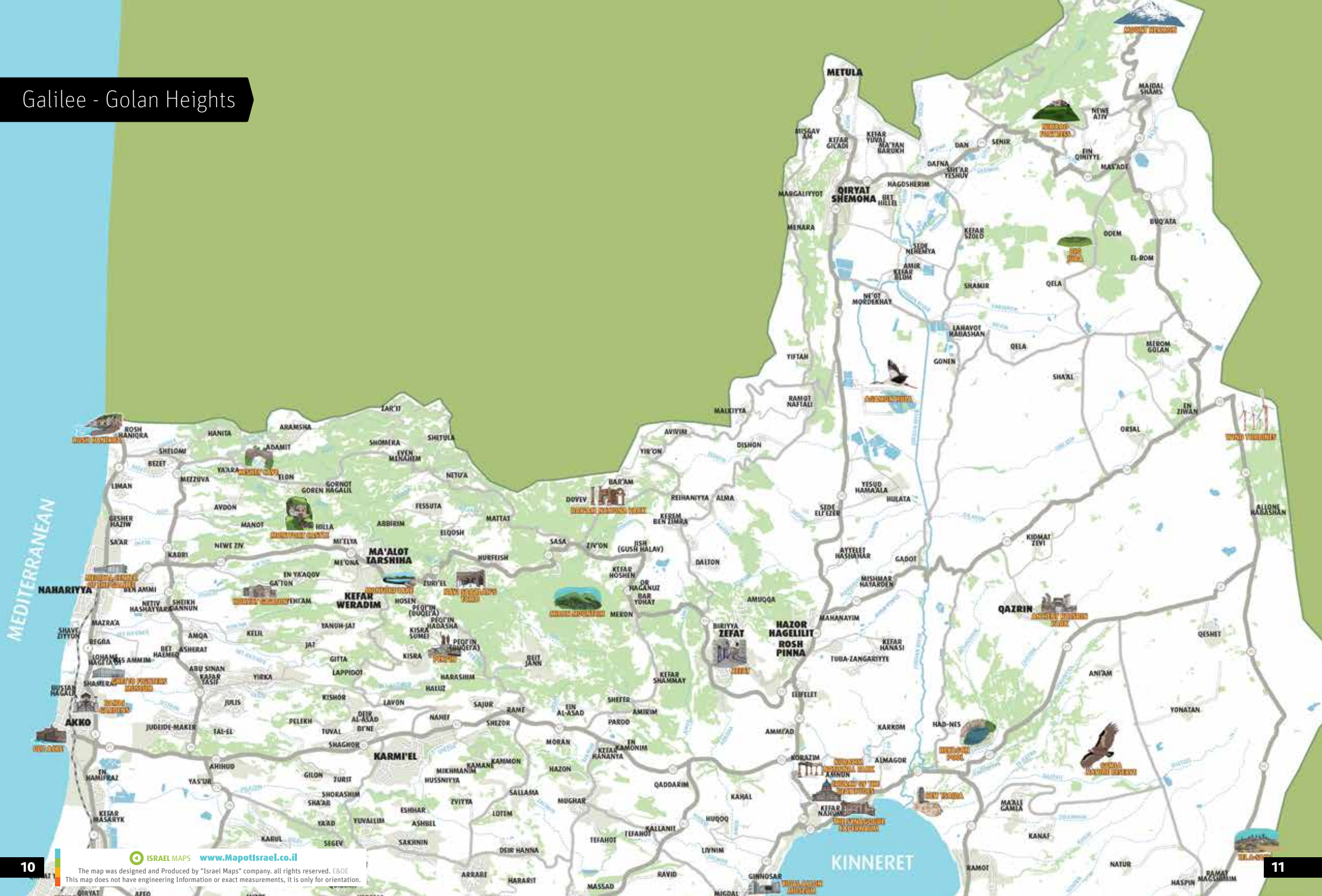
EIN KAREM



Tel Aviv Jaffa



Galilee - Golan Heights



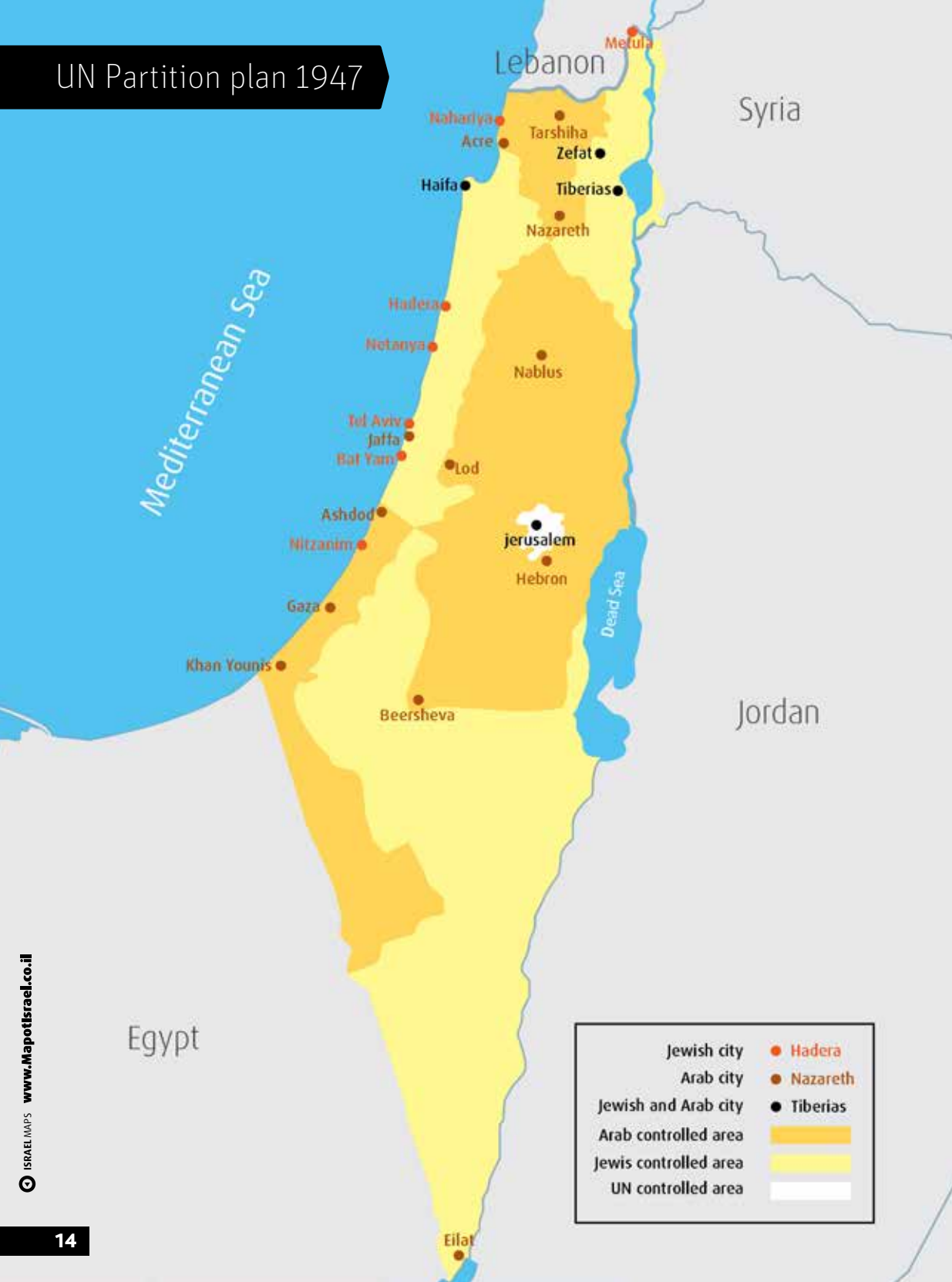
Tribes of Israel



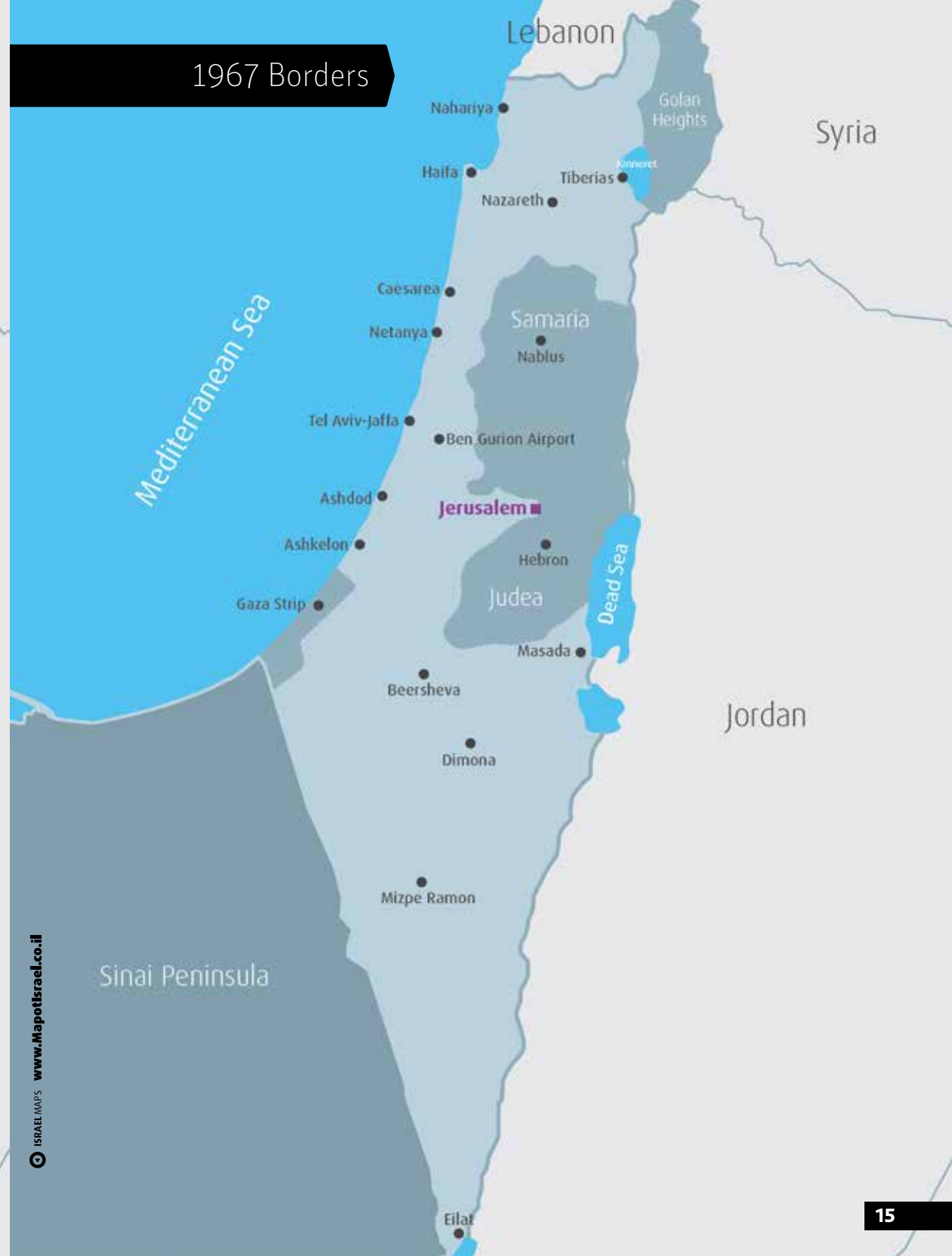
Israel in the Middle East



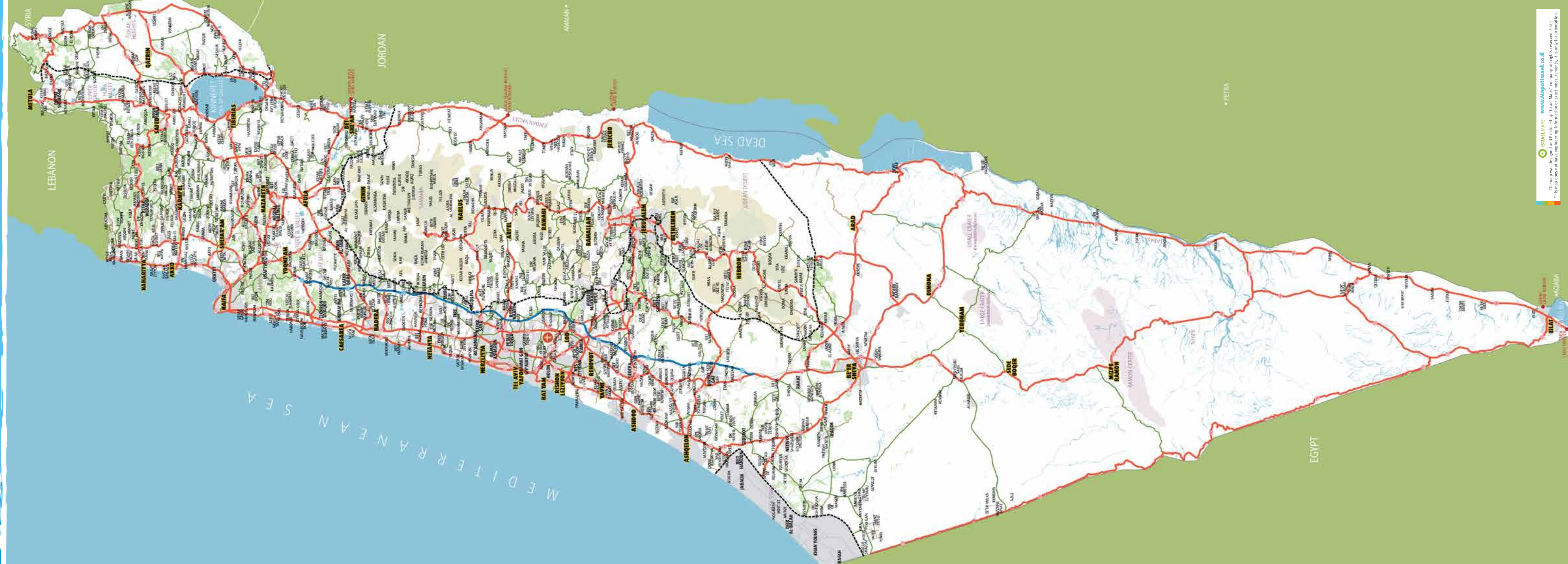
UN Partition plan 1947

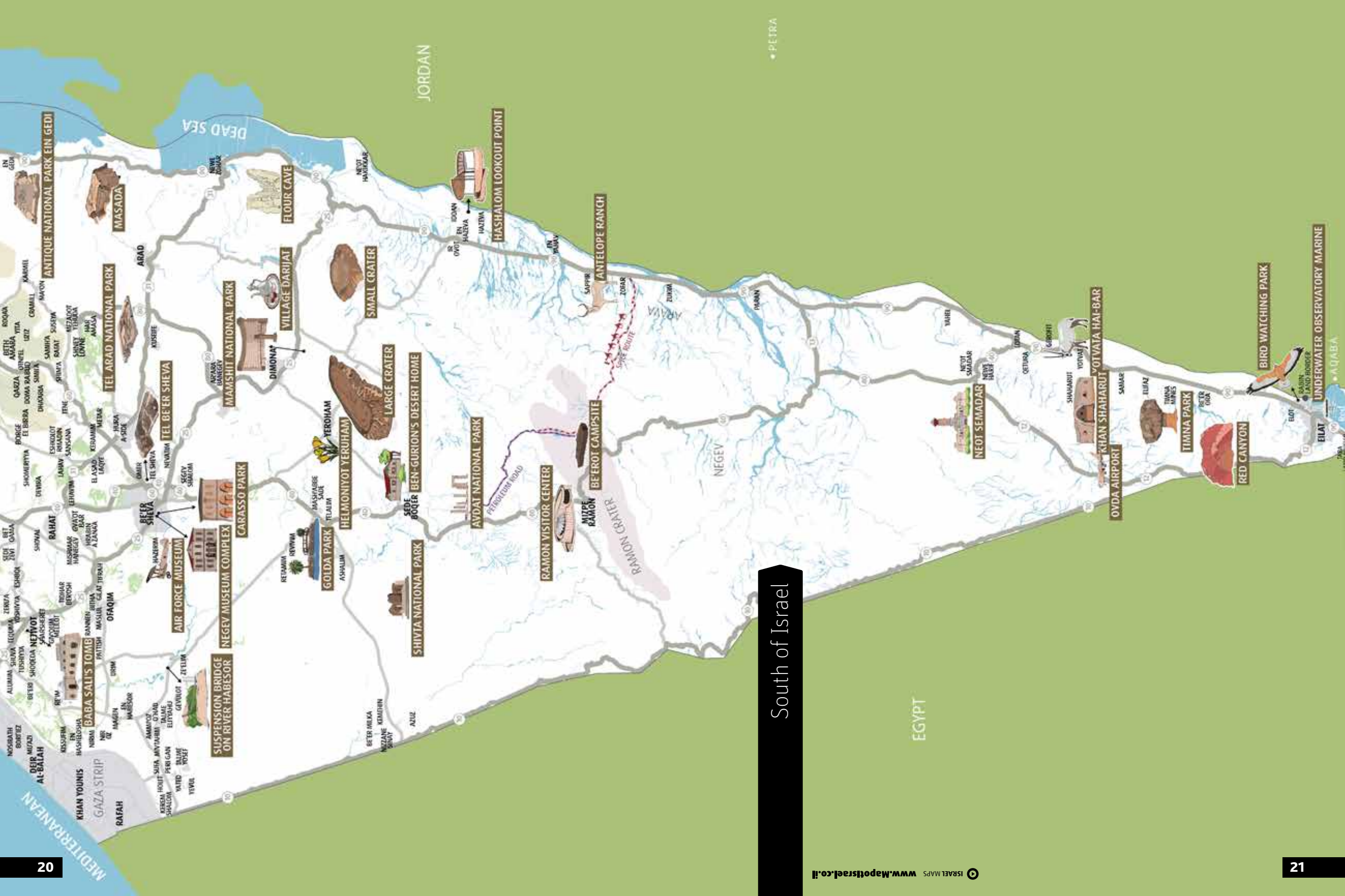


1967 Borders



Israel





JORDAN

• PETRA

South of Israel

EGYPT

Tel Aviv

The first Hebrew city and Israel's cultural and high-tech capital.



Central Israel

Caesarea

The ancient Roman capital of Judea, a port city built by Herod the Great, and later a Crusader city.



Northern Israel

Old Jaffa

A Biblical port city and the gateway to the Middle East.



Haifa

A modern port city, home to Jews, Muslims, Christians and Bahai.



The Independence Hall

The site of the declaration of the State of Israel on May 14, 1948.



Akko

A mixed Jewish-Arab city with the remnants of a large above and below ground Crusader city.



Safed
The center of Jewish mysticism and Kabbalah.



Tel Dan
Nature reserve along the Dan River, including the ruins of Dan, the capital city of the biblical northern kingdom.



Mount Bental
Ascend to this mount to gain a great panoramic view of the Golan and Syria, and a better understanding of the events of Israel's wars of 1967 and 1973.



The Sea of Galilee
The Kinneret, the lowest freshwater lake in the world and Israel's main source of water.



Rosh Hanikra
Weather hewn grottos where a cliff meets the sea.



The Golan Heights
A plateau of great strategic and historic importance, bordering on Syria and overlooking the Hula Valley



Latrun

Jerusalem's ancient citadel, located next to Jaffa Gate and home of the Museum of the History of Jerusalem.



Jerusalem and surrounding area

The Cardo

The main street in Byzantine Jerusalem, today located in the heart of the Jewish Quarter.



The Tower of David

Jerusalem's ancient citadel, located next to Jaffa Gate and home of the Museum of the History of Jerusalem.



The Western Wall

The Kotel, the western retaining wall of Temple Mount, site of the First and Second Temples and the Al Aksa Mosque.



Machane Yehuda Market

Experience the hustle and bustle of daily life in Jerusalem at the vibrant Machane Yehudah Open Air Market, known by local Jerusalemites as "the shuk".



Davidson Archaeological Park

Excavations along the southern and western sides of the Temple Mount.



The Knesset Menorah

A sculpture of the Menorah depicting Biblical scenes, gifted by the British government.



The Shrine of the Book

Israel Museum Pavilion that houses the Dead Sea Scrolls.



Yad Vashem

Israel's national memorial to the victims of the Holocaust.



Shabbat of a Lifetime

An authentic home hospitality Shabbat experience in the heart of Jerusalem.



The Supreme Court

The highest court in Israel.



Hurva Synagogue

One of the central synagogues of pre 1948 Jerusalem, destroyed in the War of Independence and recently rebuilt.



Masada

A Maccabean fortress, fortified by King Herod and later used by Jewish rebels in their famous last stand against the Romans.



Southern Israel

The Dead Sea

The lowest point on earth and one of the saltiest bodies of water in the world.



Ben Gurion's grave and Wilderness of Zinn

Learn about the vision of Israel's first Prime Minister, Ben Gurion, at his grave in Kibbutz Sde Boker, overlooking the Wilderness of Zinn.



Ein Gedi Nature Reserve

A natural oasis of waterfalls and pools on the shores of the Dead Sea in the Judean Desert.



The Ramon Crater

A unique natural phenomenon in the Negev Desert.



Eilat

A sunny resort city on the shores of the Red Sea, surrounded by the Eilat Mountains.



Ayelet Tours, Ltd.



www.ayelet.com

ayelet@ayelet.com | 800-237-1517

19 Aviation Road Albany, NY 12205